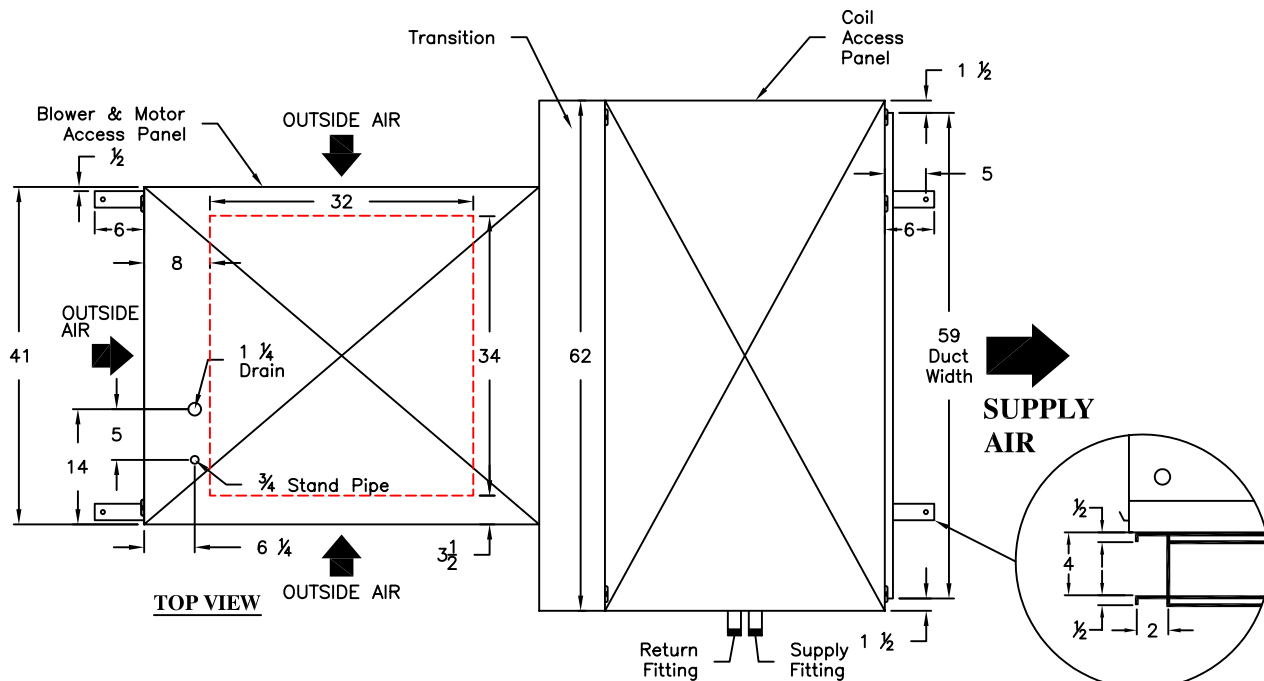
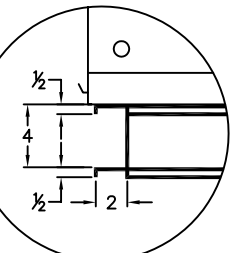


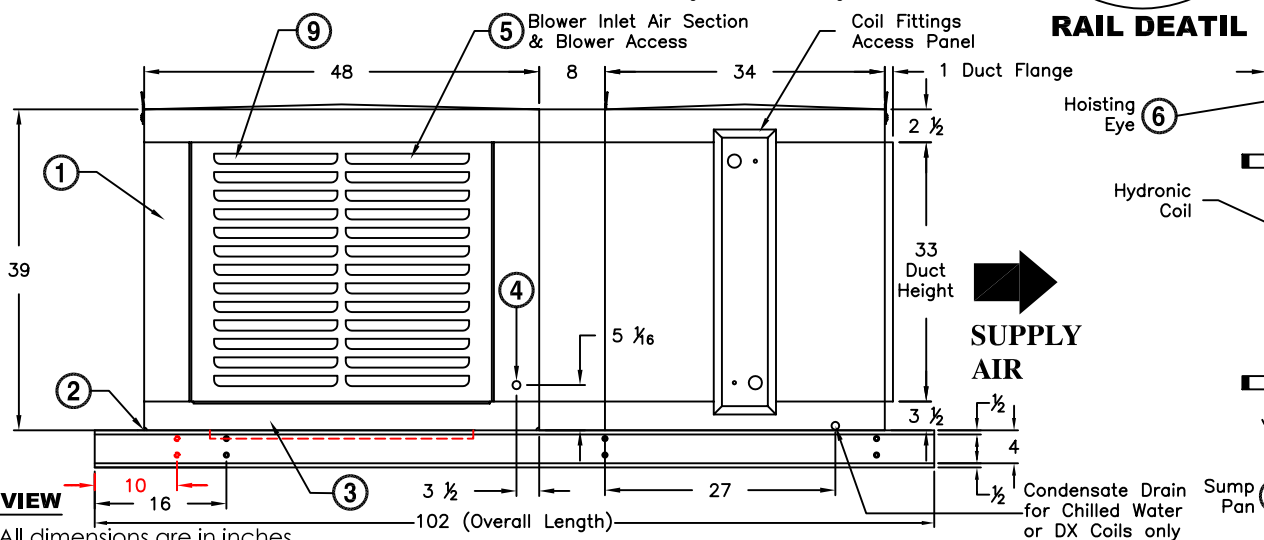
HC2, HE2 LARGE HYDRONIC PACKAGED FURNACE



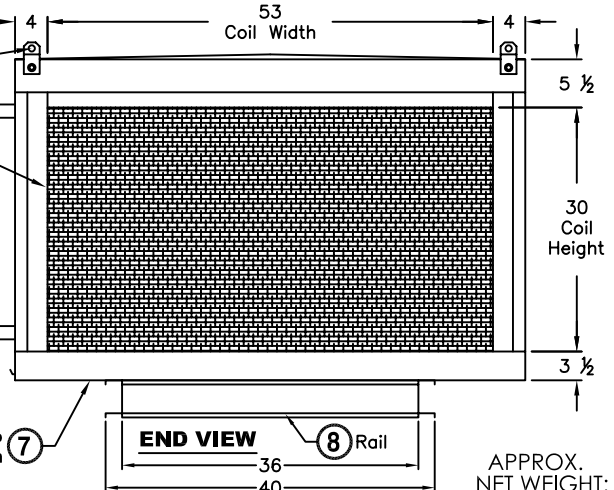
SUPPLY AIR



RAIL DETAIL



SUPPLY AIR



APPROX. NET WEIGHT: 1030 lbs.

NOTES:

- ① Base Unit Constructed of 20 ga. G90, Galvanized Finish. Base Unit with Optional Evaporative Cooled Blower Section shown.
- ② Heat only units have weep holes on the G90 Galvanized pan to curb exterior.
- ③ Evap. units include 300 Series SS Sump (12 yr. Warranty), sump pump and 2" Rigid Glacier-Cor Evap. Media as Standard Features. Optional fill and drain kit available.
- ④ Evap. Water Inlet is 1/2" in diameter.
- ⑤ Indoor units will not have inlet louvers. Solid panels are placed on the sides of the blower section. The end is open on the inlet.
- ⑥ Hoisting Points are part of Unit Mounting Rail and are not intended for suspending the unit. Contact factory for suspending details.
- ⑦ Sump Pan and Coil Support Rail are 300 Series SS (12 yr. Warranty) for Chilled Water and DX Coils Only.
- ⑧ Full Perimeter rail, 8 to 12 GA.G90, Galvanized Finish, with 6" lifting extension. NOT intended for suspending unit, contact factory.
- ⑨ (30) 1.5"x15" Inlet Louvers Per Side. (Open Area is 4.69 sq. ft.)
- ⑩ Optional Return Air opening shown. Return Air Opening is 32"x34". Return Air option includes (4) 16"x16"x1" T/A Filters as standard.

NOTE:

Maximum Volume for DX or Chilled Water Coil is 6,300 CFM. Units with over 6,300 CFM, specially sized field installed coils available. Consult factory. See Coil Performance sheet for coil details.

NOTE: All dimensions are in inches.

PROJECT:	LOCATION:	
ENGINEER:	ARCHITECT:	
CONTRACTOR:	DATE:	PAGE: _____ of _____

ARES
 A Division of Mars®Air Products
 14716 S. BROADWAY ♦ GARDENA, CA 90248
 Phone: (310) 532-1555 ♦ (800) 421-1266 ♦ Fax: (310) 324-3030
 WEB SITE: www.marsair.com ♦ E-MAIL: aresinfo@marsair.com

HC2, HE2 LARGE HYDRONIC PACKAGED FURNACE