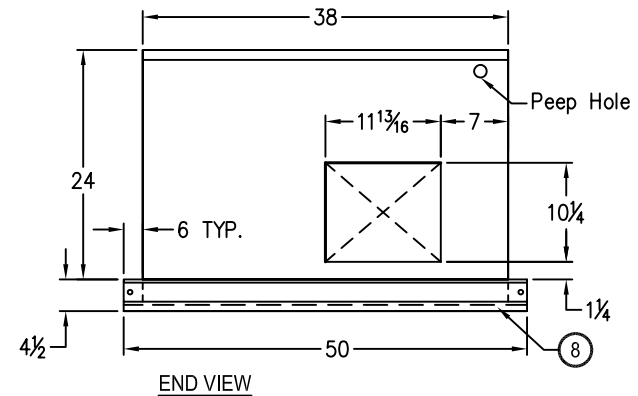
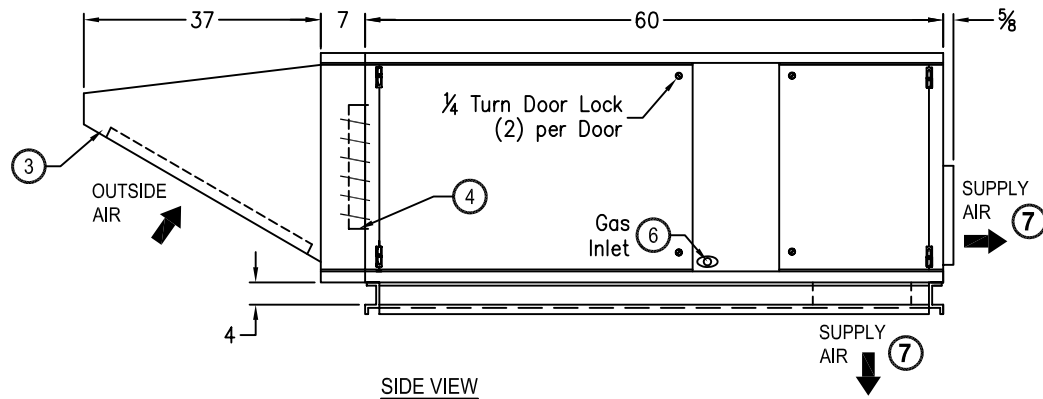
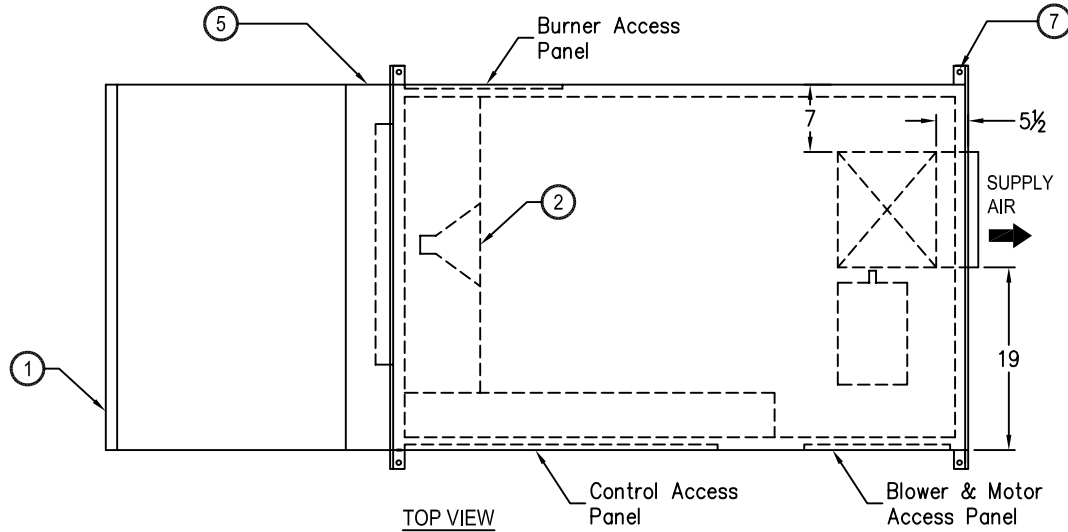


9 ARES DIRECT FIRED HEATED MAKE-UP AIR UNIT WITH INLET HOOD & INLET DAMPER



NOTES:

- ① ARES Direct Fired unit is ETL Listed. Base unit construction 20 Gage (.035") G90 Galvanized Steel.
- ② Unit with a single 12" burner, available with optional 6" burner.
- ③ Inlet hood with bird screen and (4) 25" x 18" x 1" Aluminum Mesh filters. Inlet Hood shipped loose for field installation.
- ④ Optional, 2 Position motorized inlet damper.
- ⑤ Inlet Dampet Enclosure 20 Gage (.035") G90 Galvanized Steel.
- ⑥ 3/4" NPT for 12" burners, and 1/2" NPT for optional 6" burners.
- ⑦ Drawing is illustrated with both Horizontal & Vertical discharge chutes. Please confirm your application.
- ⑧ Unit has 14 Ga., G90 Galvanized Extended Rail Access lifting lugs (1/2" diameter holes) on 4 corners.
- ⑨ All dimensions in inches and subject to manufacturing tolerances.



NOTE: ARES® reserve the right to change specifications and product design without notice. Such revisions do not entitle the buyer to corresponding changes, improvements, additions or replacements for previously purchased equipment.

NET WEIGHT:600 lbs.

PROJECT:	LOCATION:	
ENGINEER:	ARCHITECT:	
CONTRACTOR:	DATE:	PAGE: _____ of _____

ARES

A Division of Mars®Air Systems
 14716 S. BROADWAY ♦ GARDENA, CA 90248
 Phone: (310) 532-1555 ♦ (800) 421-1266 ♦ Fax: (310) 324-3030
 WEBSITE: www.marsair.com ♦ E-MAIL: aresinfo@marsair.com