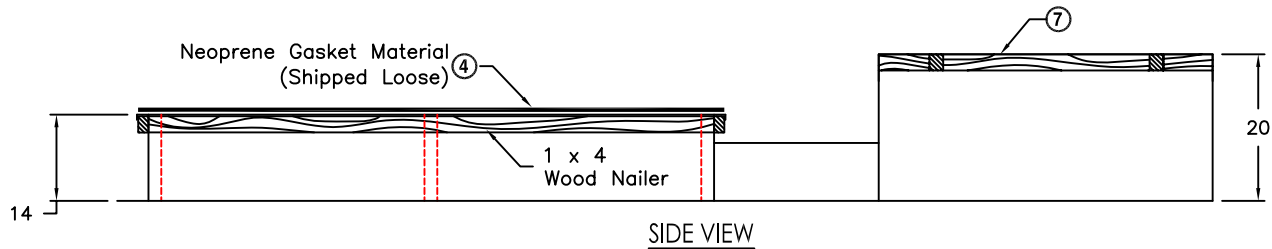
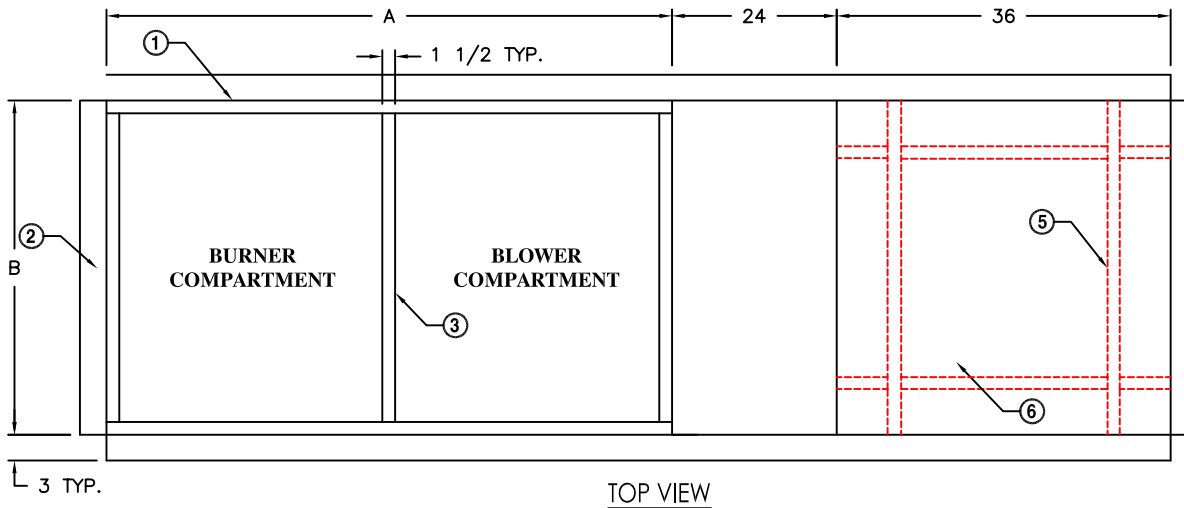


**C1760 COMBI, C1761 COMBI, & C1762 COMBI
ARES DIRECT FIRED 9, 15 & 20 COMBINATION ROOF CURBS**



NOTES:

- ① Full Perimeter Roof Curb Constructed of 18 ga. G90, Galvanized Finish. Curb with wood nailer and shipped fully assembled.
- ② 1" space between inside rail dimension and outside roof curb dimension.
- ③ Middle partition as shown will be on curbs for 15 & 20 curbs only.
- ④ High Density Neoprene Gasket included. (Field Installed)
- ⑤ Re-inforced square opening to be determined by exhaust fan model and manufacturer.
- ⑥ Capped portion of curb for field provided and installed exhaust fan.
- ⑦ Vented extension and exhaust fan to be field provided and installed.
- ⑧ All dimensions in inches and subject to manufacturing tolerances.

UNIT MODEL NUMBER	CURB PART NUMBER	LENGTH (A)	BLOWER (B)	CURB WEIGHT
9	C1760C	59	37	275
15	C1761C	69	56-3/4	305
20	C1762C	81-3/4	90-3/4	360

NOTE: ARES® reserve the right to change specifications and product design without notice. Such revisions do not entitle the buyer to corresponding changes, improvements, additions or replacements for previously purchased equipment.

PROJECT:	LOCATION:	
ENGINEER:	ARCHITECT:	
CONTRACTOR:	DATE:	PAGE: _____ of _____

ARES
 A Division of Mars®Air Systems
 14716 S. BROADWAY ♦ GARDENA, CA 90248
 Phone: (310) 532-1555 ♦ (800) 421-1266 ♦ Fax: (310) 324-3030
 WEBSITE: www.marsair.com ♦ E-MAIL: aresinfo@marsair.com