

LEGEND	ITEM
CTR	CONTROL TRANSFORMER
DT	DISCHARGE T-STAT
FB	FUSE BLOCK
FL	FLAME SENSOR
FM	FAN MOTOR
FS	FAN SWITCH
GB	GLOV BAR
GVT	GAS VALVE, 2 STAGE
HL	HIGH LIMIT SWITCH
HST	HOT SURFACE IGNITOR
MC	MOTOR CONTACTOR
PM	PUMP MOTOR
PMR	PUMP MOTOR RELAY
RCB	REMOTE CONTROL BOX

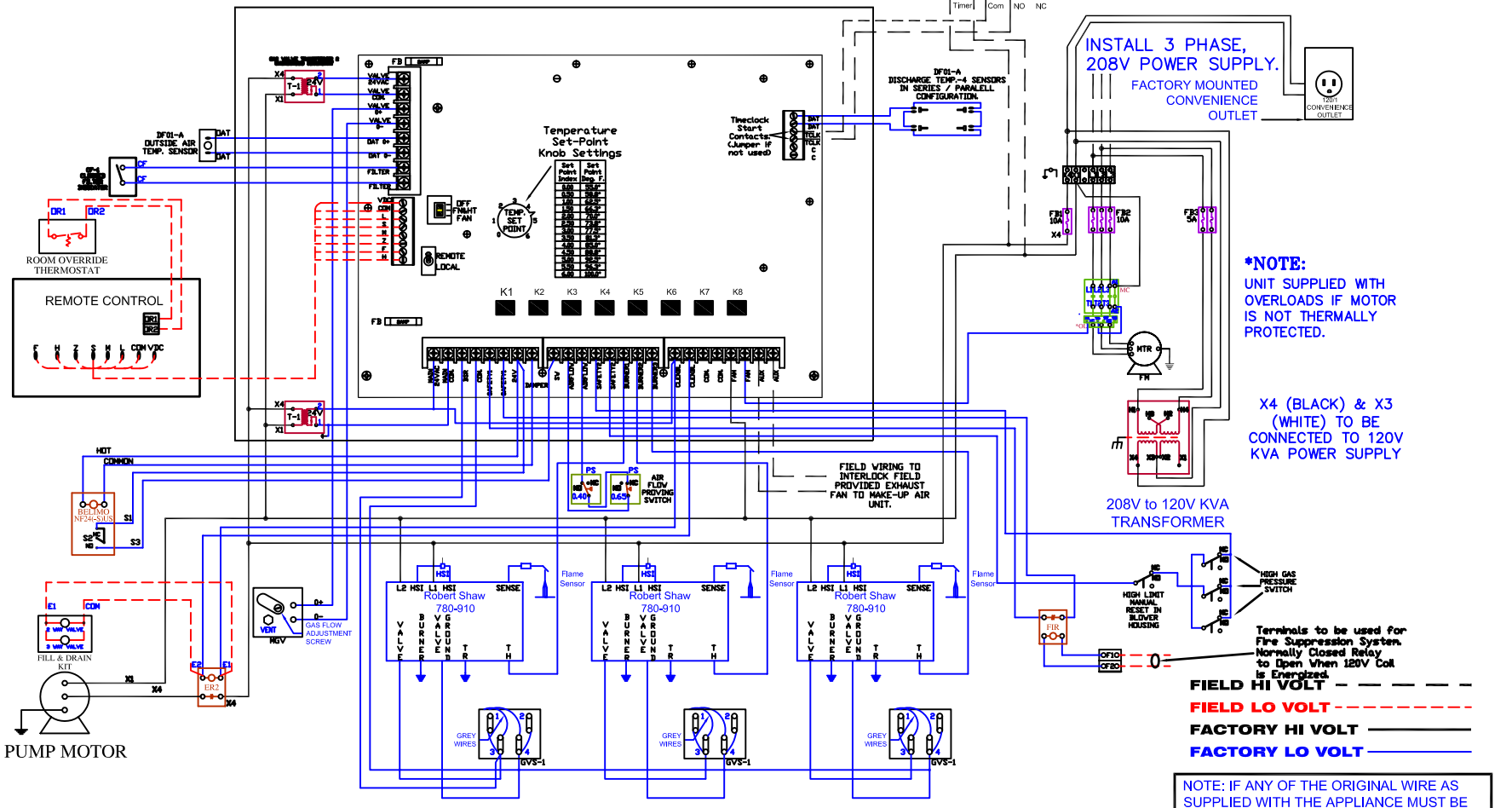
OPTIONAL PARTS	ITEM
AC	AUXILIARY CONTACTS
DMT	DAMPER MOTOR, INLET
DMR	DAMPER MOTOR, RETURN AIR
GVH	GAS VALVE, MODULATING
GVS	GAS VALVE, 1 STAGE
DL	OVERLOAD RELAY
PD	BACK DRAFT DAMPER MOTOR
PDR	BACK DRAFT DAMPER MOTOR RELAY
PS	PRESSURE SWITCH
RSS	ROOM SENSING SELECTOR
RT	ROOM OVERRIDE T-STAT

TYPICAL DIAGRAM ONLY INTENDED FOR SAMPLE PURPOSES ONLY

ARES UNIT 20 C NHODM-312-GE4bF

NOTE: BE SURE JUMPER BETWEEN TERMINAL #1 & #3 HAS BEEN REMOVED, DANGER OF SHORTING CONTROL PANEL.

BILL OF MATERIAL				
UNIT	MARS PART #	QTY	LGD	DESCRIPTION
MISC.	022350	2	TBC	TERMINAL BLOCK, CONTROL, 3 POLE
	022400	2	TBE	TERMINAL BLOCK, CONTROL, END CAP
	022340	2	TBP	TERMINAL BLOCK, POWER, 3 POLE
	022400	2	TBE	TERMINAL BLOCK, POWER, END CAP
M.U.A. UNIT	992770	1	MC	MOTOR CONTACTOR
	986445-95	1	DL	OVERLOAD
	022570	1	FB	FUSE BLOCK, 1 POLE, 30A
	139630	1	F	FUSE, 10A



PIN-OUT LEGEND

Robenshaw 780-910

LEGEND	ITEM
L2	120VAC NEUTRAL
HST	120VAC NEUTRAL
L1	120VAC HOT
HST	120VAC HOT
JUMPER	NOT USED
SENSE	FLAME SENSOR
VALVE	GVS
BURNER	GROUND
VALVE GND	GROUND
TR	GROUND
TH	IC

STATUS RELAY LEGEND

LEGEND	ITEM
K1	BURNER STATUS RELAY
K2	FAN START RELAY
K3	FREZE RELAY
K4	BURNER 1 RELAY
K5	BURNER 2 RELAY
K6	BURNER 3 / COOL ENABLE
K7	FAN RELAY
K8	AUX RELAY

*NOTE: UNIT SUPPLIED WITH OVERLOADS IF MOTOR IS NOT THERMALLY PROTECTED.

X4 (BLACK) & X3 (WHITE) TO BE CONNECTED TO 120V KVA POWER SUPPLY

Terminals to be used for Fire Suppression System. Normally Closed Relay to Open when 120V Coil is Energized.

FIELD HI VOLT - - - - -

FIELD LO VOLT - - - - -

FACTORY HI VOLT _____

FACTORY LO VOLT _____

NOTE: IF ANY OF THE ORIGINAL WIRE AS SUPPLIED WITH THE APPLIANCE MUST BE REPLACED, IT MUST BE REPLACED WITH WIRING MATERIAL HAVING A TEMPERATURE RATING OF AT LEAST 105 °C.

SHEET NO.	DATE	BY	ITEM	REVISIONS	DATE	SCHEDULE OF EQUIPMENT	FINAL SHOP DRAWINGS	WIRING DIAGRAM
ARES SERIAL NO.					SCALE		DEALER	PROJECT NAME
SERIAL NO.					DRAWN BY			

ARES
AIR REPLACEMENT ENGINEERED SYSTEMS
A Division of MARS® AIR SYSTEMS
14716 S. BROADWAY · GARDENA, CA 90248
TEL: (310) 532-1555 · FAX: (310) 324-3030 · WEB SITE: www.marsair.com